

# ВЫХОЖУ ОДИН Я НА ДОРОГУ

Музыка *Е. Шашиной*  
Слова *М. Лермонтова*

Ноты с сайта - [www.notarhiv.ru](http://www.notarhiv.ru)

Andante

Вы - хо - жу о - дин я на до -

*нар*

*p*

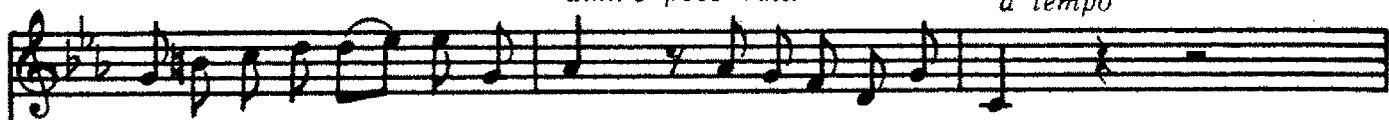
- ро - гу: сквозь ту - ман кремнистый путь блестит: ночь ти -

*dim.*

- ха. Пу - сты - ня внем - лет бо - гу, и звез - да с звез -

*dim. e poco rall.*

*a tempo*

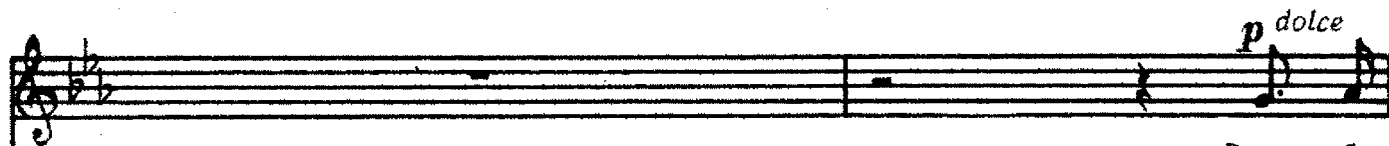


\_ до\_ю го\_во\_рит. И звез\_ да с звез\_до\_ю го\_во\_ рит.

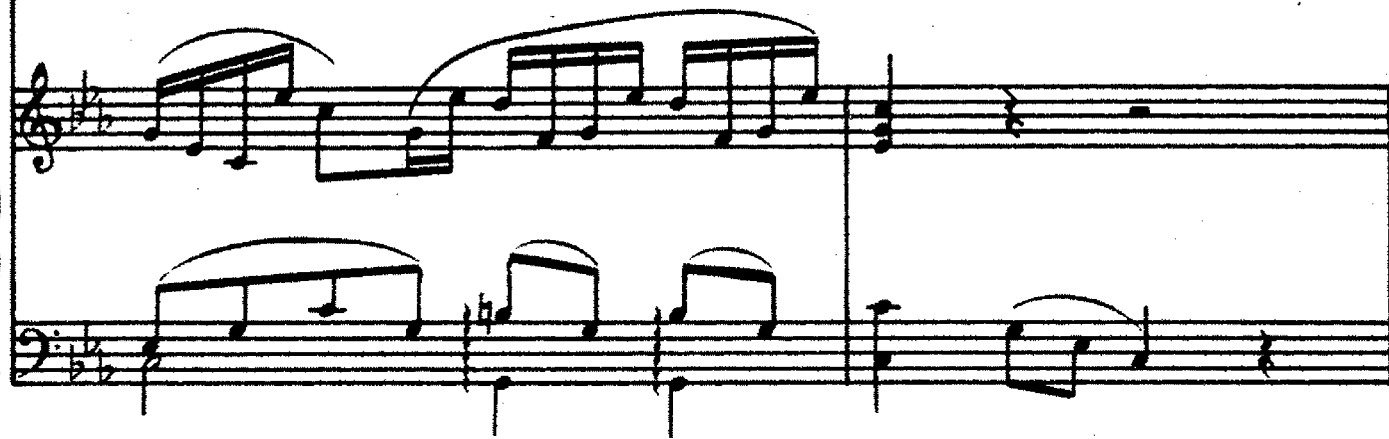


*dim. e poco rall.*

*pp a tempo*



*p dolce*  
В не\_ бе\_



*cantabile*



\_сах торжественно и чуд\_но! Спит зем\_ля в си\_я\_нье го\_лу\_



— бом...                      Что же мне                      так больно и так трудно? Жду ль чего?                      жа —

*poco cresc.*                      *dim.*

Detailed description: This system contains the first two staves of music. The top staff is a vocal line in a treble clef with a key signature of two flats (B-flat and E-flat). It begins with a rest followed by the lyrics. The bottom two staves are for piano accompaniment, with a grand staff (treble and bass clefs). The piano part features a melodic line in the right hand and a supporting bass line in the left hand. Dynamic markings 'poco cresc.' and 'dim.' are placed above the piano staves.

— ле — ю ли о чем? Жду ль че — го?                      жа — ле — ю ли о

*dim.*

Detailed description: This system contains the next two staves of music. The vocal line continues with the lyrics. The piano accompaniment continues with similar melodic and harmonic patterns. A 'dim.' marking is present above the piano staff.

чем?

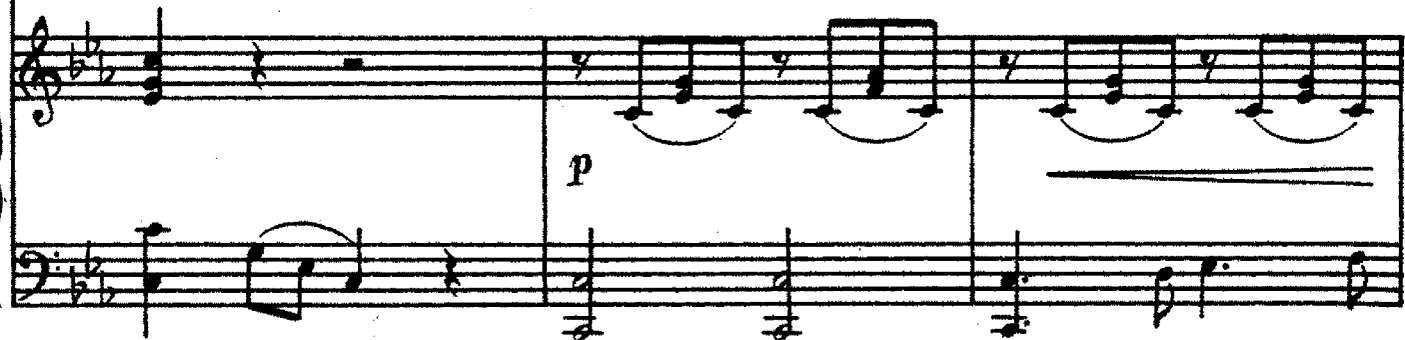
*p*

Detailed description: This system contains the final two staves of music. The vocal line concludes with the word 'чем?'. The piano accompaniment features a more active melodic line in the right hand, with many beamed eighth notes. A 'p' (piano) dynamic marking is placed below the piano staff.

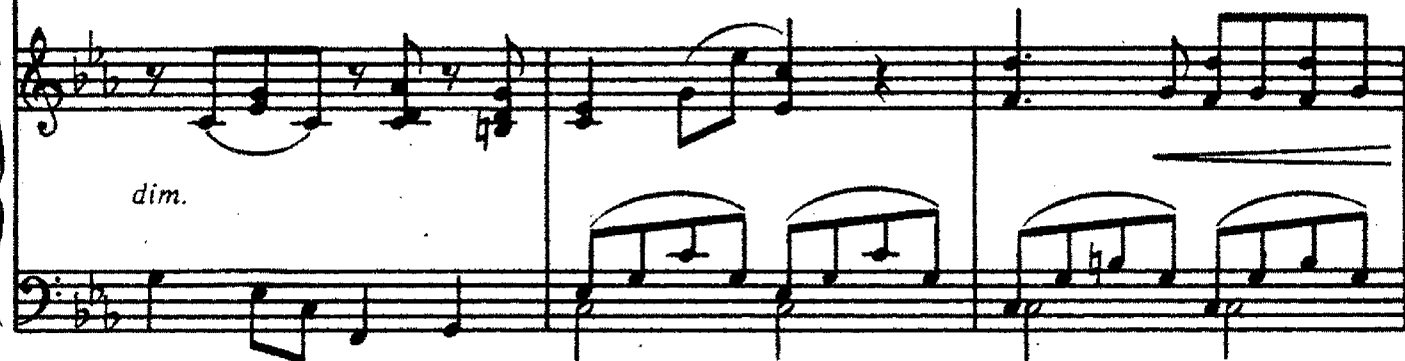
*p*



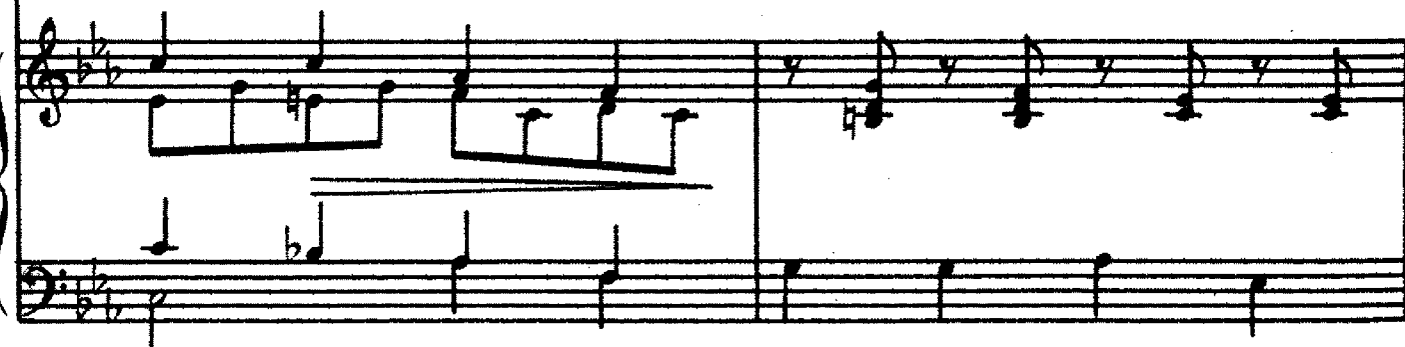
Уж не жду от жизни ни\_че\_го я, и не



жаль мне прошлого ни\_чуть; я и\_щу сво\_боды и по\_



\_ко\_ я! Я б хо\_тел за\_быть\_ся и за\_снуть, я б хо\_



*dim. e poco rall.*

*a tempo*

- тел за- быть- ся и за- снуть!

*pp a tempo*

*dim. e poco rall.*

Detailed description: This system contains the first two measures of the piece. The vocal line is on a single staff with a treble clef and a key signature of two flats. The piano accompaniment consists of two staves: a right-hand staff with a treble clef and a left-hand staff with a bass clef. The piano part features a melodic line in the right hand and a harmonic accompaniment in the left hand. The first measure is marked *dim. e poco rall.* and the second measure is marked *pp a tempo*.

Но не тем холодным сном мо-

*mp*

*mp*

Detailed description: This system contains the next two measures. The vocal line continues on the same staff. The piano accompaniment continues on the two staves. The first measure of this system is marked *mp*. The piano part features a melodic line in the right hand and a harmonic accompaniment in the left hand. The second measure is also marked *mp*.

- ги- лы... Я б же- лал на- ве- ки так за- снуть, чтоб в гру-

*poco cresc.*

Detailed description: This system contains the final two measures of the piece. The vocal line continues on the same staff. The piano accompaniment continues on the two staves. The first measure of this system is marked *poco cresc.*. The piano part features a melodic line in the right hand and a harmonic accompaniment in the left hand.

—ди дре\_ма\_ли жиз\_ни си\_лы, чтоб, дыша, взды\_ малась ти\_хо грудь, чтоб, ды\_

*dim.*

Detailed description: This system contains the first two staves of the musical score. The top staff is a vocal line in G major with a key signature of two flats (B-flat and E-flat) and a 4/4 time signature. The lyrics are: "—ди дре\_ма\_ли жиз\_ни си\_лы, чтоб, дыша, взды\_ малась ти\_хо грудь, чтоб, ды\_". The piano accompaniment is in the same key and time, starting with a *dim.* (diminuendo) marking. The piano part features a steady eighth-note accompaniment in the right hand and a more active bass line in the left hand.

\_ша, вздымалась тихо грудь.

*p*

Detailed description: This system contains the next two staves. The vocal line continues with the lyrics: "\_ша, вздымалась тихо грудь.". The piano accompaniment features a *p* (piano) dynamic marking. The right hand has a more complex texture with sixteenth-note runs and slurs, while the left hand provides a harmonic accompaniment with chords and moving lines.

*p*

Чтоб всю ночь, весь день мой слух ле\_ ле\_ я, про лю\_

*p*

Detailed description: This system contains the final two staves. The vocal line begins with a *p* dynamic marking and the lyrics: "Чтоб всю ночь, весь день мой слух ле\_ ле\_ я, про лю\_". The piano accompaniment also features a *p* dynamic marking. The right hand has a rhythmic accompaniment with slurs, and the left hand has a steady bass line with some chordal textures.

— бовь мне сладкий го\_лос пел, на\_до мной чтоб, вечно зе\_ле\_

*dim.*

This system contains the first two lines of the musical score. The top line is the vocal melody with lyrics. The bottom two lines are the piano accompaniment, featuring a steady eighth-note bass line and a more active treble line with some grace notes.

— не\_я, темный дуб скло\_нялся и шу\_мел, темный дуб склонял\_ся и шу\_

*dim. poco rall.*

*dim. poco rall.*

This system contains the second two lines of the musical score. The vocal line continues with lyrics. The piano accompaniment features a similar rhythmic pattern to the first system, with a slight deceleration indicated by the 'poco rall.' marking.

— мел.

*a tempo*

*a tempo*

This system contains the final two lines of the musical score. The vocal line concludes with the word 'мел.'. The piano accompaniment returns to the original tempo, marked 'a tempo', and features a more complex treble line with sixteenth-note passages.